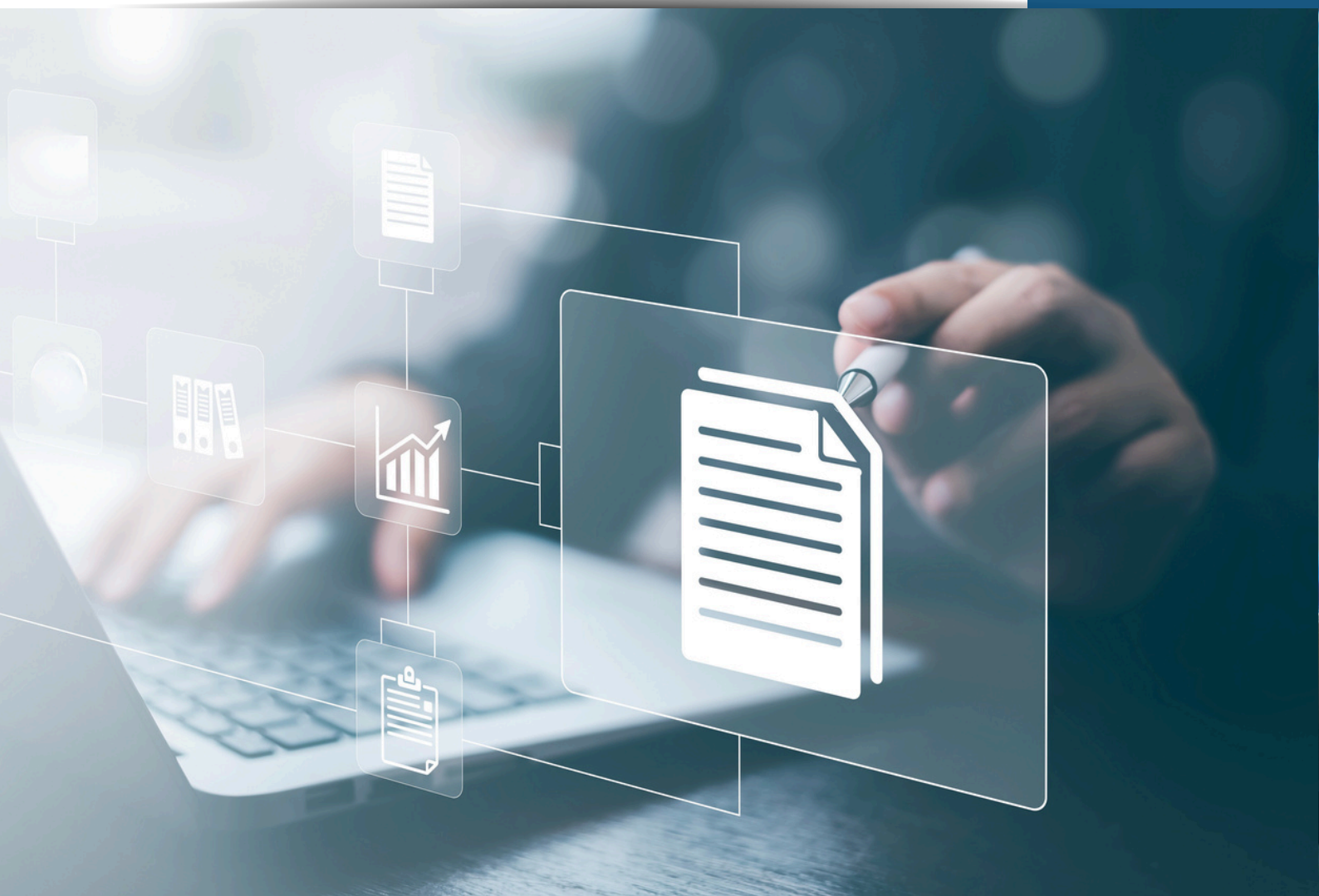




## Certificate Lifecycle Management System



# Managing the digital certificates of the enterprise organization is a challenging mission:



Inactivity of services and systems



Inability to manage existing certificates and their status



Utilizing manual processes that result in issues

**CertM performs an automatic scanning process that updates the validity of all certificates through a central PKI management system.**

## The central management system addresses challenges such as:

- Using digital processes instead of error-prone manual processes.
- Digital certificates and smart cards
- Detecting and viewing existing certificates and their status
- Maintenance optimization and efficiency
- Centralized system for managing PKI infrastructures
- Automation throughout certificate lifecycles
- Automatic certificate renewal
- Integration with HSM components
- Certificate expiration alerts
- Integration with international CA providers and organizational CA

# Functionality

## Monitoring and Alerts

- Reports and statistics
- Filtering and screening to generate reports based on required criteria
- Certificate expiration alerts and warnings, to facilitate timely action
- Logs collected by monitoring systems through SNMP/SYSLOG

## HSM Component Integration

- Secure key storage in a dedicated physical device (HSM) with partitioning capability
- Key storage for various purposes: SSL, Code Signing, Client Authentication, Docker Container
- ComSign KSP service on servers/endpoints for communication with the central KSP Server
- Uses Reference for central HSM
- Automatic creation of a KDC authentication certificate (for LOGON) from the central HSM using ADCS

## Interfaces

- System is On-Prem/SaaS
- Integrates with several CAs, organizational CA services (supports MSCA/EJBCA), external CA services (DigiCert), third-party systems, HSM components (given CSP), AD, data security and monitoring systems, external DB, REST/SOAP API

## Central Management

- Easy-to-use and Intuitive Control Screen (WEB) for management
- Issues various digital certificates such as SSL, Authentication, etc.
- Digital certificate creation, configuration, signing, and issuance
- Display of all network certificates, with advanced filtering options
- Automatic certificate renewal close to expiration date (configurable)
- Alerts to system manager (via email/SMS) regarding expiring certificates
- Revocation/suspension of digital certificates
- Certificate display/download
- Full resilience

## CA and Network Scanning

- Network scanning and status display of all existing digital certificates (including IIS, Apache, F5, Imperva, GigaMon)
- Verification of certificates installed on system-linked CAs
- Automatic search for certificates installed on the organizational network
- Direct scanning via an Enrollment Agent
- Certificates catalogued by the components in which they are embedded: protocols, IP addresses, ports, URLs, and more

# Functionality

## Automation

- Automatic digital certificate renewal
  - Certificate expiration alerts
  - Automated action configuration via API
- 

## Display

- All the organization's digital certificates centralized on a single screen
  - Comprehensive display of all existing digital certificates on the network and CAs
  - Current status of every digital certificate throughout its lifecycle
- 

## Management and Monitoring

- Digital certificate lifecycle management
  - Search/filter/sort based on required criteria
  - Revocation/suspension of digital certificates
  - Manual/automated management
- 

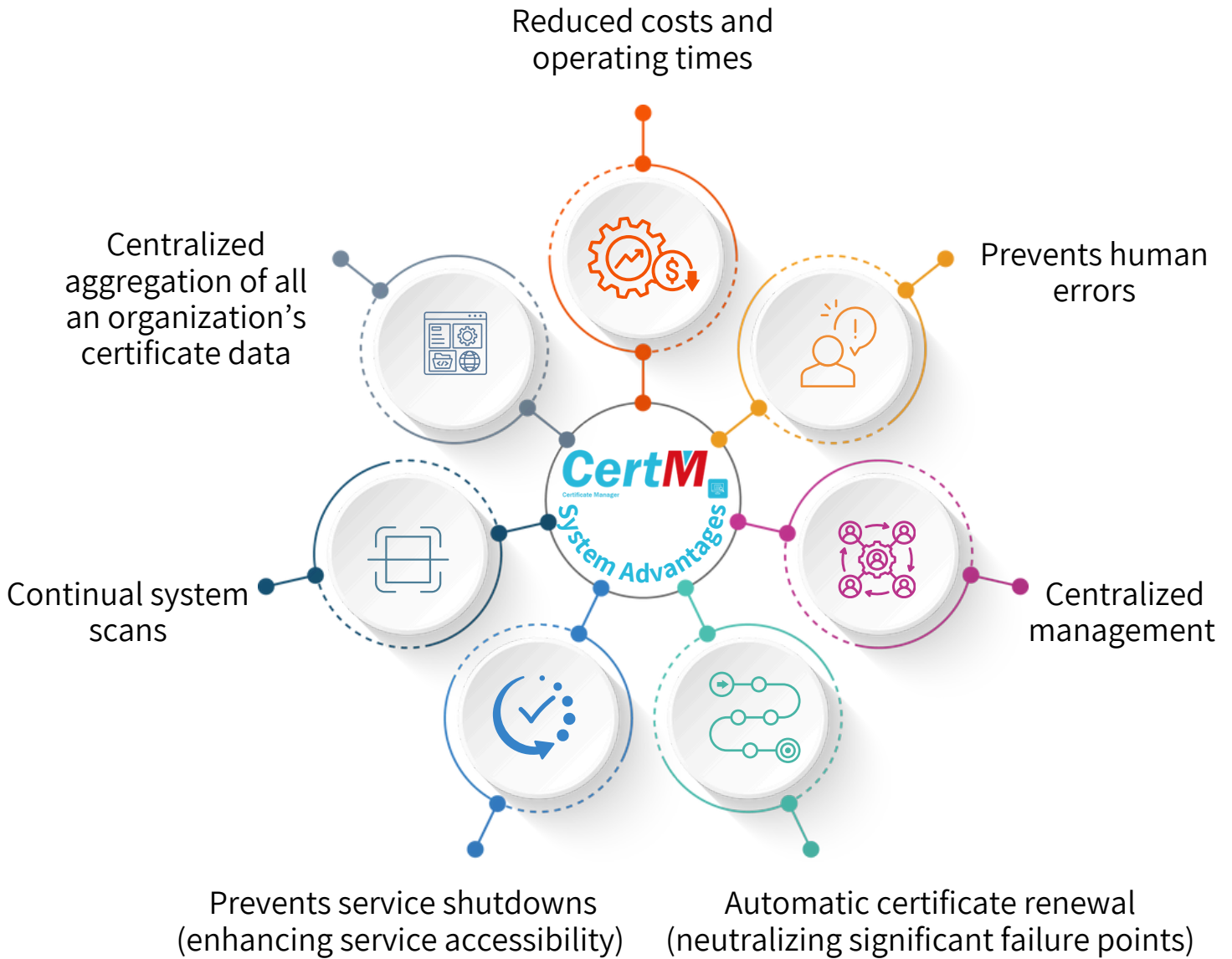
## Reporting

- Digital certificate filtering by CA
  - Filtering based on protocols/ports/devices and more
  - Reports and statistics
  - Alerts and warnings
- 

## CA and Network Scanning

- Network and CA scanning to detect all network digital certificates (SSL/TLS, SSH, Mobile, Kubernetes, WiFi & VPN)
- Direct scanning via an Enrolment Agent
- Integrating with Private/Public CAs
- API for interfacing with Third-Party systems
- Integrating with AD

# System Advantages





# CONTACT US



[www.comsigntrust.com](http://www.comsigntrust.com)



\*8770



[info@comsigntrust.com](mailto:info@comsigntrust.com)



[Comsigntrust](https://www.linkedin.com/company/comsigntrust)